

# BriteSide®

*The Difference is Easy to See™*

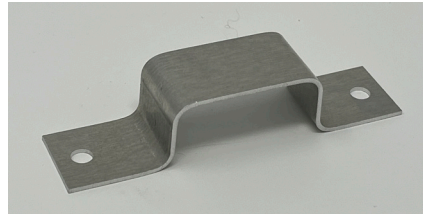
## Briteside® Panel Mounting Accessories

Lordon's BriteSide® Panel mounting accessories have undergone our rigorous testing procedures to assure you they meet the toughest industry standards. All Briteside® Reflective Panels & Hydrant Collars are shipped complete with the necessary mounting accessories including Brackets, Screws, Rivets or Push Pins. Contact our Customer Service Department for more information.

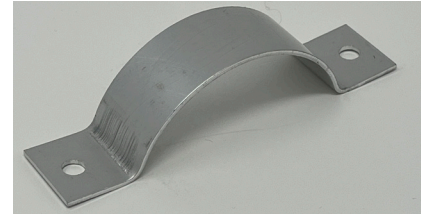
### Pole Mounting Brackets:



(BSD-S-BRAK)  
 BSD Mounting Bracket  
 For 2" Square Posts



(BSD-S-BRAK)  
 BSD Mounting Bracket  
 For 1.75" Square Posts



(BSD-R-BRAK)  
 BSD Mounting Bracket  
 For Round Posts

### Rivets and Screws:



Item #15216  
 Tamper Resistant Square  
 Head Screw (3/4", 1")



Item #38301  
 Drill Bit  
 (Used W/ Tamper Resistant Screws)



(XTREE)  
 X-Tree Push Pin



(BSH-RIVET)  
 Aluminum Drive Rivet

426 Sand Shore Road, Unit 3, Hackettstown, NJ 07840 • [csr@lordoninc.com](mailto:csr@lordoninc.com)